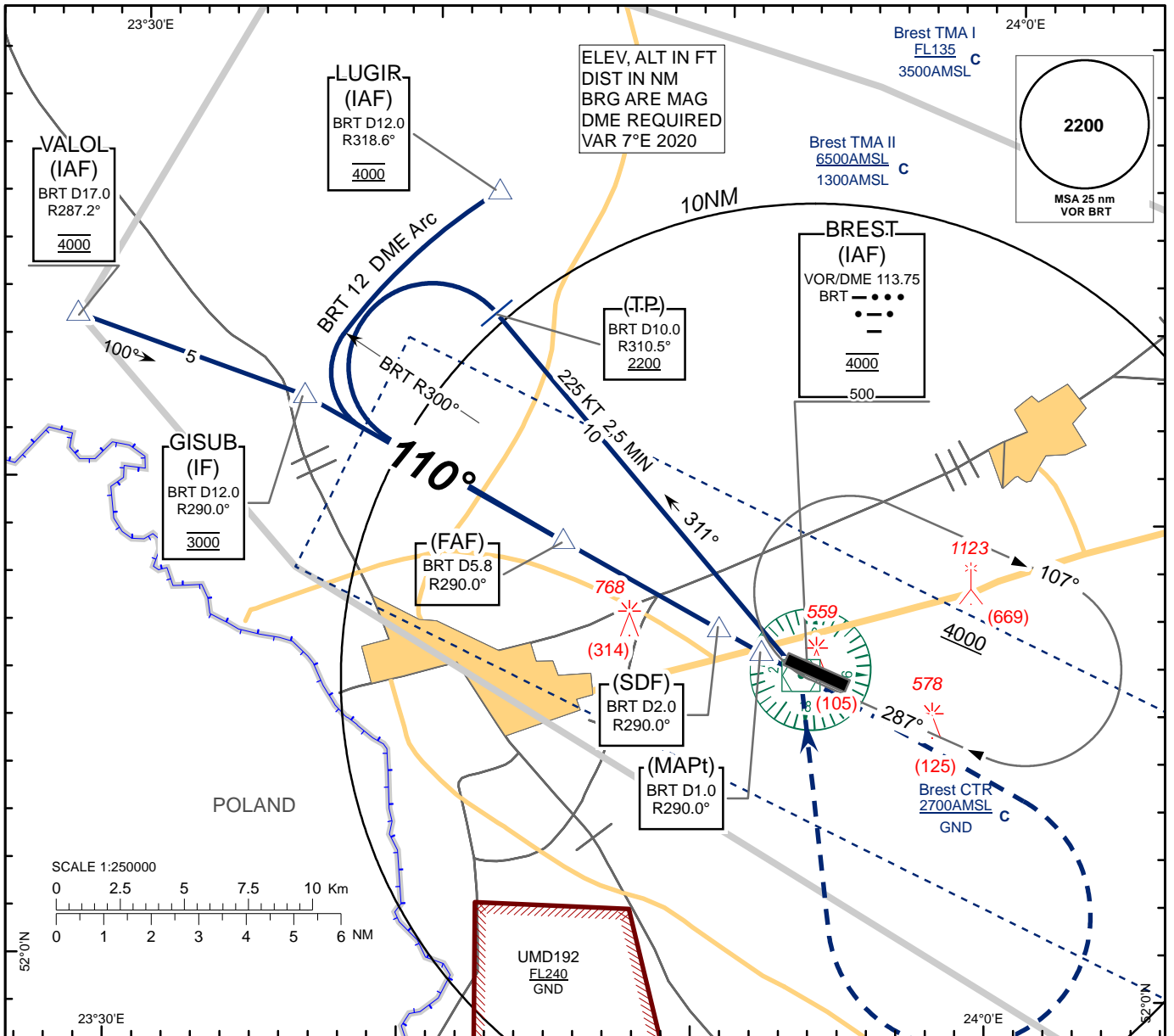


**INSTRUMENT
APPROACH
CHART - ICAO**

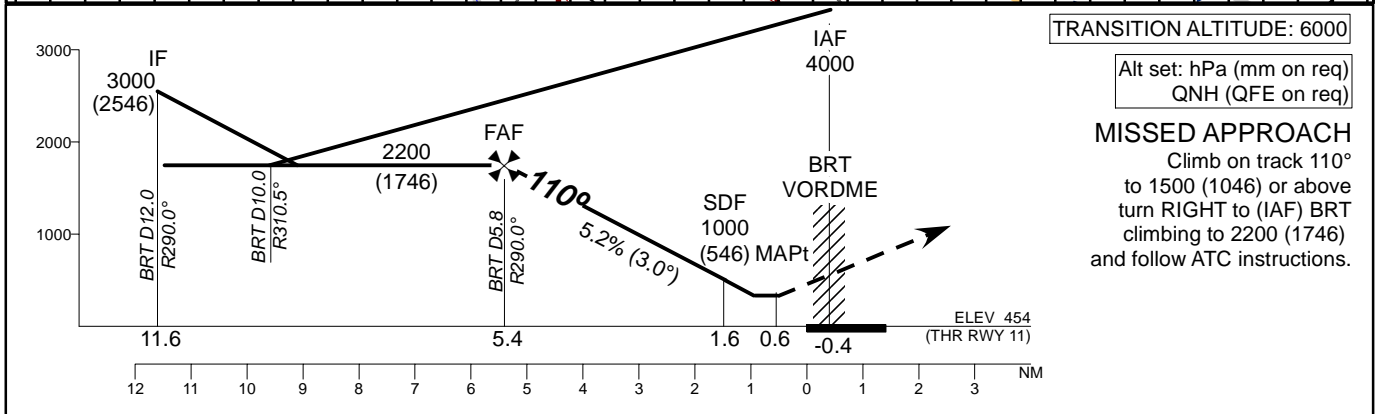
AERODROME ELEV 469
HEIGHTS RELATED TO
THR RWY 11 - ELEV THR 454

TWR 127.700
MET 136.525 (EN)
118.225 (RUS)

**BREST
VOR
RWY 11**



CHANGE: Measurement year of MAG VAR; ADD Tabulation GISUB.



TRANSITION ALTITUDE: 6000
Alt set: hPa (mm on req)
QNH (QFE on req)
MISSED APPROACH
Climb on track 110°
to 1500 (1046) or above
turn RIGHT to (IAF) BRT
climbing to 2200 (1746)
and follow ATC instructions.

Aircraft Category	A	B	C	D	BRT	6	5	4	3	2	1
Straight-in Approach OCA(H)	VOR/DME				840 (390)						
					DIST THR	5.6	4.6	3.6	2.6	1.6	0.6
					ALTITUDE	2200	1960	1640	1330	1010	700
Circle - to - land	950 (480)	1420 (960)	1520 (1050)	1520 (1050)	HEIGHT	(1746)	(1506)	(1186)	(876)	(556)	(246)
Timing not authorized for defining the MAPt											
GS		Kts	80	100	120	140	160	180			
Desc.Rate(5.2%)		ft/min	420	530	630	740	840	950			

BREST
VOR
RWY 11

AERONAUTICAL DATA TABULATION

VOR approach to RWY11 from BRT VOR/DME, VALOL, LUGIR	
Fix/point	Coordinates
LUGIR (IAF) R 318.6° D12.0 BRT	521627N 0234214E
VALOL (IAF) R 287.2° D17.0 BRT	521329N 0232759E
GISUB (IF) R 290.0° D12.0 BRT	521159N 0233553E
(FAF) R 290.0° D5.8 BRT	520910N 0234455E
(SDF) R 290.0° D2.0 BRT	520728N 0235023E
(TP) R 310.5° D10.0 BRT	521353N 0234220E
BRT VOR/DME	520633.7N 0235315.7E
(MAPt) R 290.0° D1.0 BRT	520700N 0235152E
THR RWY 11	520646.93N 0235243.63E